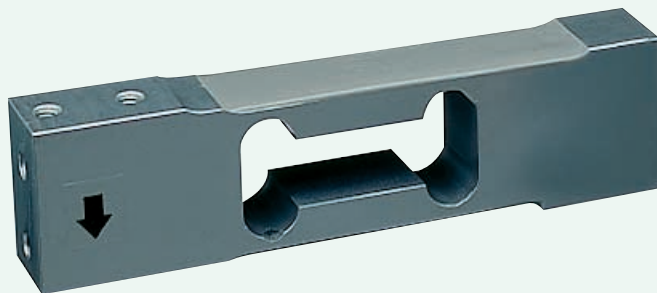


# Single Point Load Cell 5kg ... 100kg Type N/C3

global weighing technologies



## MP 41

- Aluminium alloy construction
- Compatible with other sources
- Single point 400x400 platform
- Approved to OIML R60

### APPLICATIONS

- Bench scales
- Counting scales
- Check weighing systems

### Technical Data

Accuracy class

Minimum dead load

Rated capacity

Safe overload

Rated output

Tolerance on rated output

Tolerance on zero signal

Repeatability

Creep, during 30 min.

Temperature effect on zero

Temperature effect on output

Input impedance

Output impedance

Insulation impedance

Recommended supply voltage

Max. supply voltage

Nominal ambient temp. range

Usable ambient temp. range

Cable

Protection class

$E_{min}$

$E_{max}$

$E_U$

$C_n$

$d_C$

$s_o$

$d_{Rep}$

$d_{cr}$

$TK_0$

$TK_c$

$R_{LC}$

$R_0$

$R_{IS}$

$B_u$

$U_{max}$

$B_T$

$B_{TU}$

-

-

N

0.03 %

<0.03 %  $C_n$

<0.028 %  $C_n/10K$

<0.014 %  $C_n/10K$

C3

0.02 %

<0.017 %  $C_n$

<0.022 %  $C_n/10K$

<0.011 %  $C_n/10K$

0 %  $E_{max}$   
s.table

150 %  $E_{max}$

2 mV/V

±10 %  $C_n$

±5 %  $C_n$

<0.01 %  $C_n$

400  $\Omega \pm 20 \Omega$

350  $\Omega \pm 3.5 \Omega$

>2000 x 10<sup>6</sup>  $\Omega$

10 V

15 V

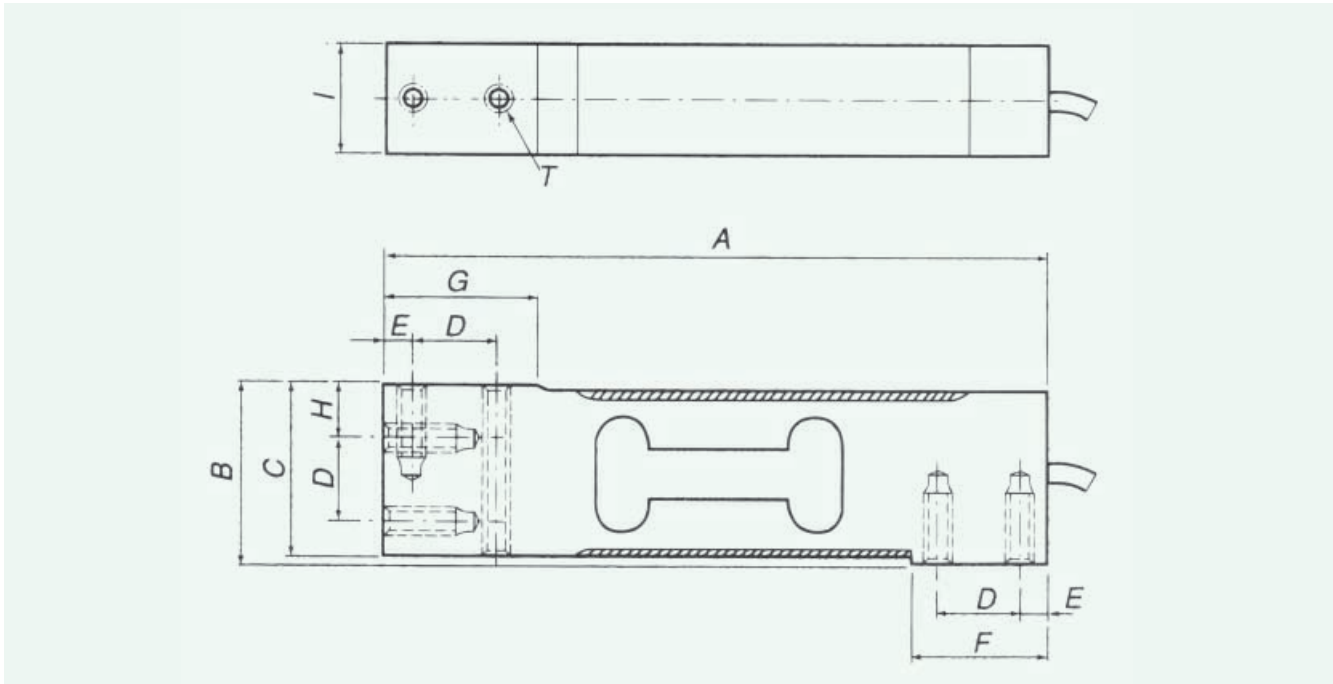
-10...+40°C

-20...+65°C

1 m, 4 wires with screen

IP 65



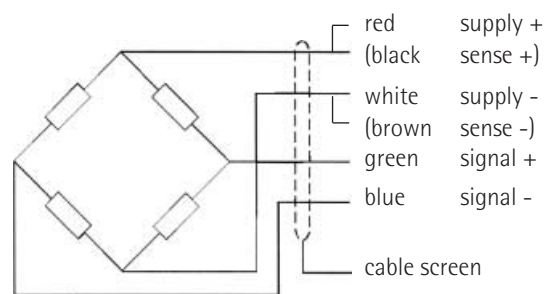


Dimensions all in mm

Capacity	A	B	C	D	E	F	G	H	I	T
5 kg ... 100 kg	150	40	38.5	19	6	31	34	12	25	M6x1.0 DP 16

**Type and Order Code** **Max. capacity**

MP 41/50 N	MP 41/50 C3	5 kg
MP 41/11 N	MP 41/11 C3	10 kg
MP 41/16 N	MP 41/16 C3	15 kg
MP 41/21 N	MP 41/21 C3	20 kg
MP 41/31 N	MP 41/31 C3	30 kg
MP 41/51 N	MP 41/51 C3	50 kg
MP 41/76 N	MP 41/76 C3	75 kg
MP 41/12 N	MP 41/12 C3	100 kg



The technical data given here serve only as a product description and must not be interpreted as guaranteed characteristics in the legal sense.

Autoryzowany przedstawiciel GWT GLOBAL Weighing Technology □

P.H.U. WEGA Andrzej Zubka □

Adres do korespondencji 80-299 Gdansk Osowa ul. Kasjopei 30A □

Dział handlowy Tel. (058) 554-52-29 ; Fax. (058) 522-90-05 □

Dział projektowo - techniczny Tel. (058) 308-71-18 ; Fax. (058) 305-19-26 □

e-mail: wega@gd.onet.pl □

http://www.phu-wega.pl

GWT Global Weighing Technologies GmbH Tel. (+49) 40 679 60-303

Meiendorfer Straße 205 Fax (+49) 40 679 60-383

D-22145 Hamburg, Germany

www.global-weighing.com